

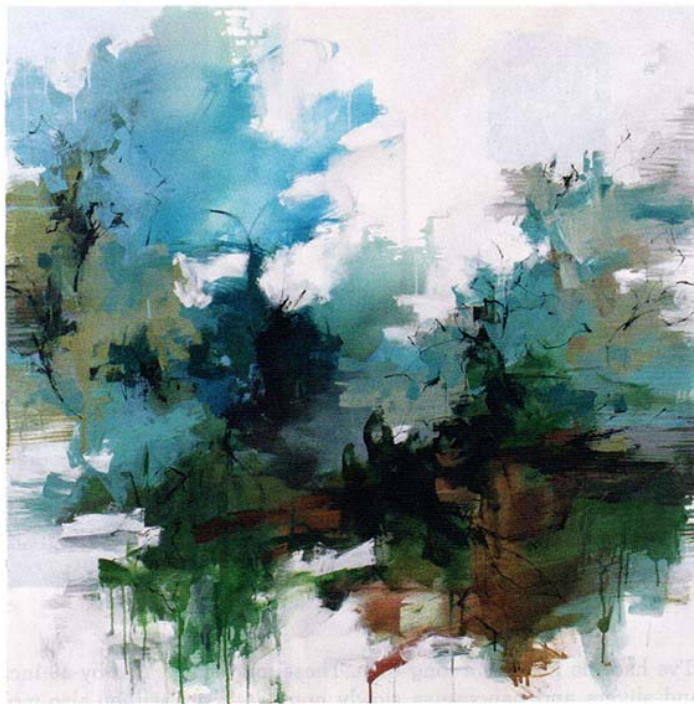


CARLOS RAMIREZ

In my garden



1



2

One look at the abstract paintings of South Florida-based artist Carlos Ramirez and the viewer is swept away in a sea of color. Blues, yellows, pinks, purples, greens or browns meld together to create a visually stimulating reflection of nature based on the feelings the natural world brings the artist rather than a direct representation of the forms. Ramirez's artwork can also be seen as a blend of two of his passions.

"I think one of my most unique features is this marriage of being a fashion designer for many years that has played with color and being this sort of avid outdoorsperson," says Ramirez, who was born in Cuba. "I sort of have a funny marriage of things. With fashion you have to be very strict and are very limited to what you can do...whereas painting is just so liberating you're able to take ideas from here and there, which I do."

With his cottage-like studio having large views of his lush garden, Ramirez is

constantly surrounded by inspiration for his work. He even takes the viewer straight into his backyard with a series of works titled *In My Garden #6, #7 and #8*. Ramirez says, "*In My Garden* refers to just as you amble through the door [of my studio] and walk through the garden you're hit with the fountain and the flowers, the mulch and the greenery."

Other new works by the artist include pieces inspired by vegetation found in Florida, such as *Night Blooming Jasmine On the Porch*, and works of Santa Fe, New Mexico, like *Hiking the Aspen Vista Trail*.

Of the former subject matter, Ramirez explains that the white flower blooms at night and lets off a fragrant aroma. "It's more of a smell that takes you over than visually beautiful," he says.

Hiking the Aspen Vista Trail was inspired by the view from the top of the trail at 12,000 feet. "You cross over the tree line and all of a sudden you're

engulfed in this wonderfully bright blue sky," describes Ramirez. "That is where the blues come in. I didn't want to paint the entire top blue, so I played around just to give you enough to want it and not oversaturate. You have all the dark pine and sort of forest greens and spruce greens throughout the painting coupled with the browns of the actual path."

Looking close-up at his work, viewers also will notice nonspecific drawings of nature that relate back to the scene. In *Hiking the Aspen Vista Trail*, for instance, there are leaves and branches. Ramirez adds, "The drawings themselves I make them with a branch or twig that I find on the ground and draw that way."

From May 19 through June 4, Ramirez will hang these and other works in his inaugural show at Hunter Kirkland Contemporary in Santa Fe. A reception for the exhibition will take place May 26 from 5 to 7 p.m. ●



3

1
*Night Blooming
Jasmine On the
Porch*, acrylic and
ink on canvas,
58 x 48"

2
*Hiking the Aspen
Vista Trail*, acrylic
and ink on canvas,
54 x 54"

3
Carlos Ramirez at
work in his studio.

4
In My Garden #8,
acrylic and ink on
canvas, 36 x 36"

5
In My Garden #7,
acrylic and ink on
canvas, 36 x 36"



Scan for
VIDEO

*"[Carlos Ramirez's] strong connection with nature
always guides his sensibility. His paintings are organic
and ripe with a deeply sensitive connection to life."*

— Nancy Hunter, owner/director, Hunter Kirkland Contemporary



4



5

PREVIEW

109